



OROSOL
INTERNATIONAL
.....
Precisely Different



CASTING SET-UP
PRECIOUS
METALS

Range Of Advance Auto Clamp Wax Injection Technology

VWI-1



Vacuum Wax Injector - 1

DVWI-1



Digital Vacuum Wax Injector

VWI-1 J-1



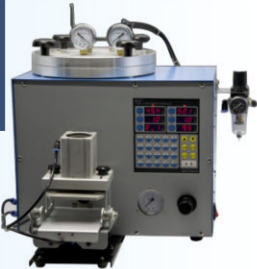
Vacuum Wax Injector-1 Auto Clamping

DVWI-1 J-1



Digital Vacuum Wax Injector Auto Clamping

D-VWI-4



Wax Injector Of Auto Pressure Regulate

D-WI-4



Jumbo Clamp Vacuum Wax Injector

T4A



New Pressure Regulate

T4B



Murti Model New Pressure Regulate

D-VWI-4 AAC-3



Digit Vacuum Wax Injector(D-VWI4) And Digit Clamping (AAC-3)

D3



Vacuum Wax Injector

D4



D5



ZL-2



Conveyor Belt System Vacuum Wax Injector

D7



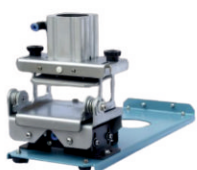
Murti Model Vacuum Wax Injector

DVWI-B

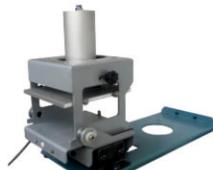


Vacuum Wax Injector

AV-1



110 x 110



135 x 135



120 x 150



AUTOMATIC ADVANCED DIGITAL VACUUM WAX INJECTOR

SPECIFICATION

Voltage	AC 220V, 50/60Hz (110V is available)
Power Consumption	500W
Air Supply	0.3-0.7Mpa
Temperature Display Range	40-99.9°C
Temperature Setting Range	40-99.9°C
Injection Pressure	10-250Kpa
Clamp Pressure	30-250Kpa
Vacuum Timer	0-99.9 S
Injection Timer	0-99.9 S
Forward	30-250 Kpa
Hold Time	0-30 S
Wax Pot Capacity	3 Kg
Dimensions	600 x 452 x 15mm (L*W*H)
Net Weight	Approx. 30 Kg



MICRO PROCESSOR BASED DIGITAL VACUUM ROBOTIC WAX INJECTOR



- Innovative nozzle mirror makes a more direct observation of positioning of nozzle and rubber mould.
- Upgraded clamp unit allows a wider range of application than previous generation.
- Position of clamp cylinder is adjustable according to rubber mould's center point of force.
- First innovative front hanging clamp unit in the industry; Standard clamp unit and large clamp unit are switchable on one wax injector.
- Fast rise and fall structure for clamp unit, operators do not need any tools when processing rubber mould of various thickness on one wax injector. Two fingers are well enough to easily position the nozzle and rubber mould into perfect match.
- Wax injection valve uses 'air cylinder structure' and 'straight-through flow path'. Under same injection pressure and temperature, injection distance of this valve is 9 times further than other valves. This means the accuracy is higher and flashes is lower than traditional injectors during production. It is more suitable to be used to produce big bracelet, high-precision wax accessories and big and ultra thin wax components.
- Temperature, timing and pressure are controlled by digital circuit, more accurate than logic simulation circuit.
- Alarming while vacuum tank is overflow, 24x7 non stop working.
- 100 programs to save memory, rfid system provided to work faster on saved programme. Led table lamp is given for qc.

SPECIFICATION

- Voltage : 220V 50/60 Hz | Power : 500W
- Air Inlet Pressure : 0.3 -0.7 Mpa
- Temp. Setting Range : 40-99.9C
- Injection Time : 0-99.0S | Injection Pressure : 10-250Kpa
- Keeping Timer : 0-30S | Wax Capacity : 3Kg
- Dimension : 70 x 46 x 56.5 cm



AURA MIX

INVESTMENT MIXING MACHINE



5-FLASK



6-FLASK

Technical Specification	OS-3	OS-5	OS-6
Max. Of Flask	120-140mm	150mm	150mm
Max. Height of Flask	200mm	230mm	230mm
Max. No. of Flask	3	5	6
Flask Container	290mm	380mm	380mm
Height Flask Container	255mm	260mm	260mm
Max. Volume Of Investment Material	6 Kg	12 Kg	16 Kg
Stirring Container	200mm	280mm	280mm
Height of Stirring Container	305mm	315mm	315mm
Motor Fixing	Dual Speed	Dual Speed	Dual Speed
Type of Electric Current(3 Phase)	400V, 50Hz I, 3KW	400V, 50Hz I, KW	400V, 50Hz I, 3KW
Dimension (W X D X H)	760 x 370 x 770mm	1015 x 550 x 1355mm	1015 x 550 x 1355mm
Gross Weight	120 Kg	150 Kg	150 Kg
Vaccum Pump & Oil in to be changes after	25 CFM & 150 Flask	40 CFM & 150 Flask	63 CFM & 150 Flask

STATIC BURNOUT FURNACE



- Static burnout furnace is use for plan casting jewelry. It has open type heating element which gives maximum heating into the chamber.
- This type of furnace has 4 sides heating elements along with optional bottom heating elements also provide in necessary, which gives uniform heating into the chamber.
- To saves electricity we used multiple layers of different grade of heating insulation for minimized heat lost.
- Furnace has by default De-waxing tray as the bottom of the furnace which can easily remove out hot wax from the flask and this will help reducing carbon particle into chamber.
- The control panel consist of touch screen LCD type PID which will have 5 programs of 16 steps with 99 Hrs. delay time facility. It also has safely temperature controller along with phase failure phase reversal, over voltage and under voltage protection.



PID Control Panel



Hook tube Design Coil

MODEL NO.	FLASK NO.	CHAMBER SIZE	PHASE	MAX. OP. TEMP
ORSF04	4	12"W X 12"D X 12"H	SINGLE	750°
ORSF06	6	12"W X 16"D X 12"H	THREE	750°
ORSF09	9	16"W X 16"D X 12"H	THREE	750°
ORSF12	12	16"W X 22"D X 12"H	THREE	750°
ORSF15	15	16"W X 28"D X 12"H	THREE	750°
ORSF18	18	16"W X 32"D X 12"H	THREE	750°
ORSF24	24	24"W X 24"D X 24"H	THREE	750°

* Customised Size Also we Make on Order as Per Your Requirement

REVOLVING BURNOUT FURNACE



- PLC Control Panel System
- Heating program settable with delay start.
- 10 Burnout Cycle Memory.
- Each Cycle With 16 Ramp Temperatures.
- Ramp and Holding Time
- Heat Resistant stainless steel Chamber & Revolving Plate.
- Minimum Hot loose.
- Air cooling system.

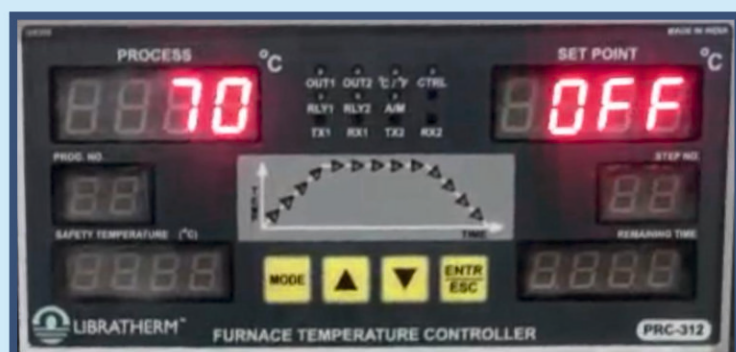
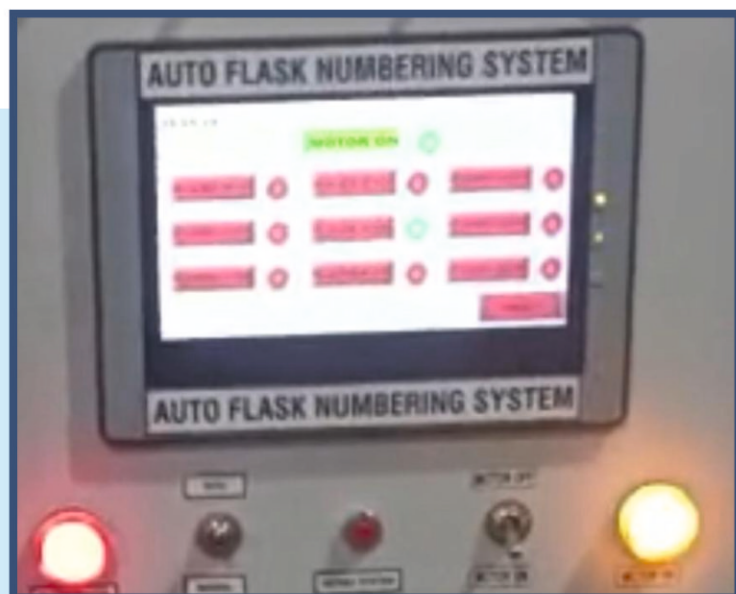


**An ideal de-waxing burnout furnace for investment flasks used in lost wax casting
With stainless steel revolving plate and burnout chamber, heated evenly.**

- Kanthal Make Element - more reliable heating element design according to surface load
- Programmable
- Error messages can be displayed
- Immediate accessibility to target flask
- Double rack
- Wax discharge pipe & lost wax collector
- Cooling system for quick loading
- Pneumatic Door (Optional)
- Wheels, Optional

TECHNICAL DATA

MODAL NO :	AF6	AF9	AF12	AF18	AF24	AF30
Flask Capacity (flanged)	6	9	12	18	24	30
Number of Racks	Single	Single	Single	Double	Double	Double
Max Flask Height	250mm	250mm	250mm	300mm	300mm	300mm
Max Flask Diameter	100mm	100mm	100mm	100mm	100mm	100mm
Maximum Operating Temperature (800c° & 900c° Optional)	750c°	750c°	750c°	750c°	750c°	750c°
Turntable Speed(rpm)	2	2	2	2	2	2
Installed Power	9 Kw	10 Kw	12 Kw	15 Kw	16 Kw	18 Kw
Power Of Revolving Motor (HP)	0.25	0.25	0.25	0.5	0.5	0.5
Weight (Aprrox)	450kg.	500kg.	550kg.	650kg.	700kg.	750kg.



Double Chamber Pressure Over Vacuum Casting

TVC-D



TECHNICAL DATA

	TVC5d	TVC10d	TVC12d
Number of casting programs	100	100	100
Crucible Volume	100 cc	280 cc	380-500 cc
Crucible working capacity	400g Bronze 500g Silver / 1000g Gold	1500g Bronze 1500g Silver / 3000g Gold	2300g Bronze 2500g Silver / 5000g Gold
Flask max. diameter (mm)	● 150 / ○ 200	● 150 / ○ 200	● 150 / ○ 200
Flask max. height (mm)	● 300 / ○ 400	● 300 / ○ 400	● 300 / ○ 400
Induction heating power	4.9 kW	10 kW	12 kW
Vacuum pump	Built-in 25 m3/h	Built-in 25 m3/h	Built-in 25 m3/h
Pressure over vacuum	3 bar	3 bar	3 bar
Max. temperature	● 1250 °C / ○ 1600 °C	● 1250 °C / ○ 1600 °C	● 1250 °C / ○ 1600 °C
Granulation unit	○	○	○
Autotest with data report	●	●	●
Monitoring system for data acquisition	○	○	○
Flask check before casting	●	●	●
Vacuum leakage detector	●	●	●
Oxygen Analyzer	○	○	○
RS232 remote interface	○	○	○
Main alloys	● Gold (Au), Silver (Ag), Copper (Cu), Brass, Bronze, Aluminium (Al) and their alloys, ○ Magnesium		
	Provided ● / ○ Available on request		

TVCd

Double Chamber Pressure over Vacuum Casting Machine

TVCd is the pressure over vacuum casting machine designed to meet the more severe needs in lost wax casting production. This machine works with a new, revolutionary double chamber concept. This innovative system gives several advantages compared with the traditional single chamber suction system currently available in the market. In TVCd melting chamber and flask chamber are completely independent and at the moment of casting the machine controls the metal injection into the mold by applying a differential pressure during pouring.

This yields to a faster injection compared to the simply gravity pouring with the benefit to cast items at lower temperature. This will result in better surface finishing of the cast parts.

The casting cycle takes only few minutes and, while the previous charge can be loaded into the crucible and melted, thus overlapping two cycles for no time waste. The machine is fully automatic having also a PC based monitoring system for process parameters acquisition and production data management with easy editing of casting programs suitable for many kind of alloy (optional).

This revolutionary machine is the synthesis of the most advanced engineering and years of experience in casting that only TOPCAST will bring in your factory.



TECHNOLOGY & FEATURES

GAS WASH PROCEDURE

Crucible loading operation introduces oxygen. The Gas Wash Purge procedure removes the oxygen (1) in a very fast and efficient way and then refills back the chambers with Argon or Nitrogen gas (2). Compared with the traditional crucible protection with flow-meter regulation the consumption of gas is dramatically reduced and the alloys oxidation is minimized. Moreover the crucible life is increased: TVC series crucible last up to 250 400 casting cycles according to the graphite quality.

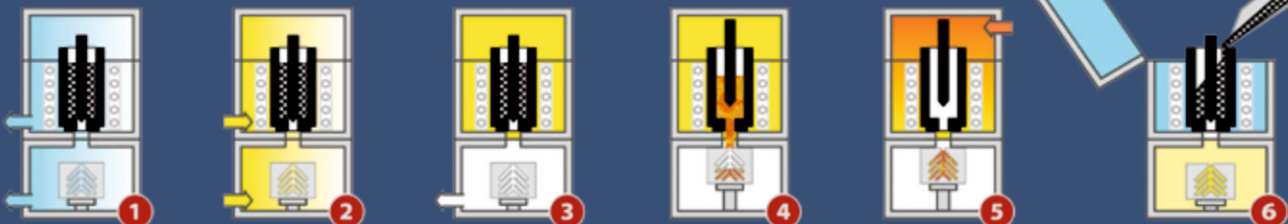
MELTING

Advanced Self Tuning thermoregulation (AST) with exact temperature control of the melted alloys. Two Set-Points available: Homogenization and Casting Temperature. Medium frequency induction heating stirs the melted alloy and leads to a perfect homogeneity. Pulse Stirring Management (PSM) for an extremely low frequency stirring. Highest power density in the market features strongest stirring and low gold losses.

When the stopper lifts up, it is very important to control the injection rate to avoid turbulences. VC has the unique feature to have the injection rate controllable and programmable (IRC). The metal enters smoothly inside the mould (4). Then, after filling and during the solidification phase, a strong compression takes place on the tree (5). No turbulences in filling and high compression lead to a large reduction of shrinkage porosity phenomena.

TREE PROTECTION AFTER CASTING

Thanks to the double chamber concept, after the solidification phase, the flask cools down in a protective atmosphere while at the same time you can load your alloy in the melting chamber for the next melting. This operation will allow an overlapping of the casting cycles which will give you the ability to protect longer the tree before removing it without losing time and productivity.



■ Air / ■ Vacuum / ■ Gas

TVCs

TVCs are fully automatic, robust, easy to use pressure over vacuum casting machines designed for small and medium casting laboratories.

This family of machines work with the well-known pressure over vacuum concept, thus preferring the perforated flask against the solid ones.

Melting is achieved in protective atmosphere (Nitrogen, Argon or Helium) while a strong vacuum pump is provided in order to boost the suction effect into the mould. As soon as the metal has entered the mould a strong compression takes place on top of the tree to reduce shrinkage porosity.

Crucible graphite consumption is greatly reduced thanks to the gas wash procedure which removes the oxygen in few seconds from the charge loading operation.

The machine is fully automatic making the operators job very easy (you simply have to load the alloy and flask and then press the START button). This will give you the most consistent result flask to flask which is the key factor for a reliable casting production.



TECHNICAL DATA

	TVC3s	TVC4s	TVC10s
Crucible Volume	100 cc	280 cc	380 cc
Crucible working capacity	1 kg Au 0.5 kg Ag	2 kg Au 1 kg Ag	3 kg Au 1.5 kg Ag
Flask maximum diameter (mm)	Ø150	Ø150	Ø150
Flask maximum height (mm)	280	280	280
Induction power	3 kW	4 kW	10 kW
Vacuum pump	External	External	External
Pressure over vacuum	3 bar	3 bar	3 bar
Granulation unit	○	○	○
Autotest with data report	●	●	●
Flask check before casting	●	●	●
Vacuum leakage detector	●	●	●
RS232 remote interface	○	○	○
Main alloys	Gold (Au), Silver (Ag), Copper (Cu), Bronze, Aluminium (Al) and their alloys		
	Provided ● / ○ Available on request		

TCC



TECHNICAL DATA

	Small			Medium			Large	
Model	TCC10-280cc	TCC12-380cc	TCC12-500cc	TCC15-1000cc	TCC15-1400cc	TCC20-2000cc	TCC35-4000cc	TCC45-7000cc
Induction power	10 kW	12 kW	12 kW	15 kW	15 kW	20 kW	35 kW	45 kW
Number of casting programs	100	100	100	100	100	100	unlimited	unlimited
Crucible working capacity	1,5 kg Silver - 3 kg Gold	2 kg Silver - 4 kg Gold	3 kg Silver - 5,5 kg Gold	6 kg Silver - 12 kg Gold	8,5 kg Silver - 16 kg Gold	12 kg Silver - 23 kg Gold	25 kg Silver - 46 kg Gold	44 kg Silver - 81 kg Gold
Speed of the pulling unit	min 10 mm/min max 999 mm/min							
Wire diameter	min 3 - max 15 mm Ø			min 4 - max 30 mm Ø			min 5 - max 40 mm Ø	
Simultaneous wire casting	max 2 wires			max 3 wires			max 6 wires	
Sheet size (LxW)	max 60 x 8 mm			max 100 x 10 mm			max 130 x 20 mm	
Tube diameter	min 10 - max 45 mm Ø			min 10 - max 85 mm Ø			min 12 - max 85 mm Ø	
Profile protection with protective gas flushing	●	●	●	●	●	●	●	●
Automatic crucible feeding unit	○	○	○	○	○	○	○	○
Extra induction generator				○	○	○	○	○
4 wheels pulling unit	○	○	○	○	○	○	○	○
Bending Unit	○	○	○	○	○	○	○	○
Cooling system by water sprinkles	○	○	○	○	○	○	○	○
Video camera for remote supervision							○	○
Cutting unit on the run	○	○	○	○	○	○	○	○
Vacuum Pump	Built-in 4 m³/h			Built-in 25 m³/h				
Max. Temperature	1500°C							
Double thermocouple on crucible	○	○	○	○	○	○	○	○
Autotest with data report	●	●	●	●	●	●	●	●
Monitoring system for data acquisition	○	○	○	○	○	○	●	●
Vacuum leakage detector	●	●	●	●	●	●	●	●
Oxygen analyzer							○	○
Remote Interface							●	●
Main alloys	● Gold (Au), Silver (Ag), Copper (Cu), Brass, Bronze, Aluminium (Al) and their alloys							
Provided ● / ○ Available on request								

LASER DIVISION

Wide 10" LCD Full-HD TouchScreen Display

Ampio Monitor LCD Full-HD 10" TouchScreen

Stereo-Microscope 10x by LEICA or Lynx EVO by VisionEngineering

Stereo-Microscopio Leica a 10 ingrandimenti o, in alternativa, Lynx EVO

Warm colored, Dimmable and non-Flickering LED Illuminating System

Sistema di Illuminazione LED a Luce Calda, di Intensità regolabile, con anti-sfarfallio

Wide Welding Chamber with Large Opening / Access

Ampia apertura di accesso alla spaziosa Camera di Saldatura

Ergonomic and Comfortable Armrest Pillows

Comodi ed Ergonomici Cuscini Poggia-Gomiti

WiFi, USB & HDMI Connectivity for Service and connection to External Display

Connettività WiFi, USB e HDMI per Assistenza Tecnica e connessione a Monitor esterno

Available with 150J, 180J or 200J of Power

Disponibile con Potenze da 150J, 180J o 200J

Perfect Stability, High Speed, High Power, Complete Reliability and Long-Life components

Perfetta Stabilità, Alta Velocità, Enorme Potenza, Totale Affidabilità e componenti resistenti all'usura

DUAL-RADIATOR Cooling System with 6L of coolant for 24h/7d cycles

Sistema di Raffreddamento a DOPPIO RADIATORE per sessioni di lavoro 24h/7d

ECO-Mode for low electricity consumption when not in use

Modalità ECO per un minor consumo di elettricità quando non in uso

	EASY-1	EASY-2	EASY-3	EASY-3 "PLUS"
LASER Source	Nd: YAG	Nd: YAG	Nd: YAG	Nd: YAG
Wavelength	1064nm	1064nm	1064nm	1064nm
Average Power	95W	100W	110W	140W
Peak Power	7,5kW	9,0kW	10kW	10kW
Max Energy	150 Joule	180 Joule	200 Joule	200 Joule
Pulse Frequency	up to 30Hz	up to 30Hz	up to 30Hz	up to 50Hz
Pulse Duration	0,1 ÷ 20 mS	0,1 ÷ 20 mS	0,1 ÷ 20 mS	0,1 ÷ 25 mS
Spot Dimension	0,2 ÷ 2,0mm (0,1mm Optional)	0,2 ÷ 2,0mm (0,1mm Optional)	0,2 ÷ 2,0mm (0,1mm Optional)	0,2 ÷ 2,0mm (0,1mm Optional)
External Control	10" Color TouchScreen	10" Color TouchScreen	10" Color TouchScreen	10" Color TouchScreen
Max Working Temp.	39°C	39°C	39°C	39°C
Power Requirements	1-Ph, 220/230 VAC, 50/60 Hz, 10A	1-Ph, 220/230 VAC, 50/60 Hz, 10A	1-Ph, 220/230 VAC, 50/60 Hz, 10A	1-Ph, 220/230 VAC, 50/60 Hz, 16A
Cooling System	Forced Air & Double Radiator 6L	Forced Air & Double Radiator 6L	Forced Air & Double Radiator 6L	Forced Air & Double Radiator 6L
Size (W x D x H)	W 59 x D 92 x H 65 cm	W 59 x D 92 x H 65 cm	W 59 x D 92 x H 65 cm	W 59 x D 92 x H 65 cm
Net Weight	49 Kg	49 Kg	49 Kg	52 Kg

Features, images, performances, weights and measures contained in the catalogue are completely indicative and approximate and may change without notice. Caratteristiche, immagini, prestazioni, pesi e misure indicate si intendono del tutto indicativi ed approssimativi e possono variare senza preavviso.



AURA LASER JEWELLERY WELDING MACHINE

ORO-200/300

Product advantage

This series of products use ergonomic design, and the use of high-quality accessories production, the whole machine is more reliable, more durable.

Gas protection system: The synchronous argon protection system controlled by computer makes the argon protection better, which can ensure the welding effect is firm and beautiful while saving the argon gas to the maximum extent.

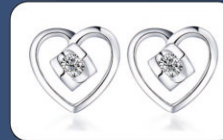
Observation system: Special microscope observation system equipped with a cross cursor, with high-speed electronic filter protection device to protect the operator's eyes from laser damage.

High welding accuracy: laser welding point diameter is only 0.2mm-3.0mm, more suitable for precision spot welding.

Small heating range: the workpiece will not appear deformation and porosity after welding.

Application field

It is especially suitable for spot welding sand holes, spot welding cracks, welding of inlaid parts and claw feet, precision welding of small parts, etc. The welding strength, precision and welding effect are greatly improved compared with the traditional process. Suitable for stainless steel, copper, gold, silver, K gold and other metals and alloy materials. Widely used in jewelry, denture, aerospace, electronic components, instrumentation, medical equipment, communications, sporting goods (golf ball head), crafts and other industries.



PARAMETER NAME	PARAMETER VALUE
Laser type	ND: YAG
Adjustable current	60A-200A
Laser frequency	1.0-50Hz
Pulse width	0.1-20ms
Wave length	1064nm
Maximum laser output power	200W
Peak power	6KW
Maximum monopulse energy	100J
Weld depth	0.1mm -2.5mm
Spot size adjustable range (spot)	0.2-3.0mm
Control system	Single chip microcomputer
Observation system	microscope/CCD
The main engine consumes power	<6KW
Cooling system	Cooling power 1600W
Electricity demand	AC220V±5%, 50Hz, 30A or select AC380V±5%

WATER JET GYPSUM CLEANING SYSTEM

- Ergonomically lit up
- Rust proof divesting cabinet with high pressure water pump for quick & total cleaning setting tank with S.S. trap.
- Mobile Chassis

HIGH SPEED PRESSURE PUMP

3 Piston high speed pressure pump used, for fastest and deep cleaning. can even remove dense investment powder

DIAMOND COLLECTION TRAY

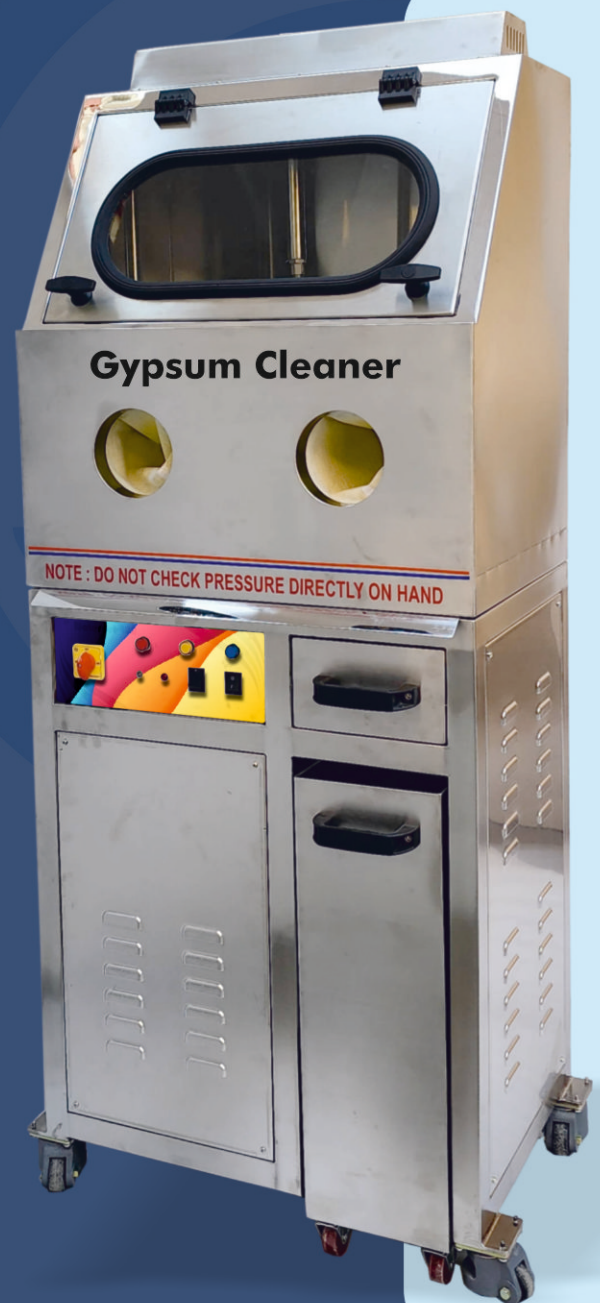
A fine mesh fitted in the diamond collection tray, eliminating tiny metal pieces or diamond going inside the settling tank.

SETTLING TANK

Settling tank at bottom can settle the powder, which is removed from the flask, to recheck for metal particles in case left any

WIDE VIEWING WINDOW

Wide vision viewing window made of toughen glass, vision does not get blurry like in case of acrylic window



Specification :

- Power Supply : 440V AC, 2.2 KW
- Water Inlet : 5 L.P.M.
- Water Pressure : 300 PSI
- Over Dimension : 965 X 854 X 1676
- Net Weight : 125 Kg.

VIBRATOR POLISHER

This is a universal machine used for all the wet processes of finishing-Roughing, Sanding and Polishing on jewelry parts, all ferrous alloys especially stainless steel.

The machine uses vibration effect that is transmitted to a polyurethane tank by an adjustable masses vibrator. Thus, the materials placed inside the tank gets three kinds of motion: centrifugal, helical and vibrant. Their combined action, together with water and abrasive materials (with Liquid compounds or paste) makes it possible to achieve superior levels of finishing.

Specification :

- Power Supply : 220 V. (50/60 Hz) Single Phase
- Tank Capacity : 20 Ltr.
- Timer : 99 Hrs.
- Vibration Support : Vibration Dampers
- Vibration Intensity : 2880 RPM
- Intensity Regulation : Adjustable
- Dimension : 50 L. x 55 W. x 115 H. (CM)
- Wight : 130 Kg.



MAGNETIC POLISHER



The machine is powered by sturdy suitable single phase motor and fitted with excellent quality magnets to provide maximum force for better polishing quality and for long life.

Specification :

- 0.5 Kg. : 0.5 HP
- 1 Kg. : 1 HP
- 2 Kg. : 1.5 HP
- 5 Kg. : 3 HP / 3 ph
- RPM : 2800

• Auto | Reverse | Forward

POLISHING & FINISHING DIVISION



SINGLE & DOUBLE HEAD VACUUM POLISHER

Single Side Polishing Machine is a compact machine with in built heavy duty dust collector and spindle to adapt grinding wheel. Blower motor of ½ h.p. along with dynamically balanced impeller ensure strong suction in work area to recover all gold particles in double filtration bags. The spindle can adapt to all the grinding wheels and special spindle can be provided to adapt to con lock drum, if required.

SPECIFICATION

- Power Source: Electric | Automation Grade :Automatic
- Material : Metal | Input Voltage: 220 V & 440 V

Double Side Bench Polishing Machine is the final step to give your product the beautiful finish it needs. Our floor k mounting model is the ultimate for high filtration's when it comes to single unit systems.

SPECIFICATION

- Material: Metal
- Jewelry Tools and Equipments Type : Polishing machine
- Power Source: Electric | Pressure : Low Pressure
- Separate buffing motors : 0.75 HP
- Central High Suction blower driven : 1.5 HP AC electric motor



LAPPING TABLE

- Heavy Vacuum Pressure
- Polisher Motor : 0.5 HP
- Dust Collector Motor : 0.5 HP
- Heavy Duty Suction motor for the Blower
- 45° Angle, Vibration free Bench Polisher
- Available in both SS & MS Powder Coated Body
- Aerodynamic designed Hood for better suction
- Foot shaker lever.
- Single & multi Pocket Bag available



FILING TABLE

- High resolution LED lamp
- Big working space
- Micro moter also can use

SPECIFICATION

- Body Type : MS Body
- Without dust collector Also Available
- Without dust collector : 1 HP
- Dimensions : 71mm X 79mm X 170mm



DRY & WET SPRUE GRINDING MACHINE

- Heavy Vacuum Pressure
- Available in SS 304 Only
- Hood deep & Plane both types on requirement

SPECIFICATION

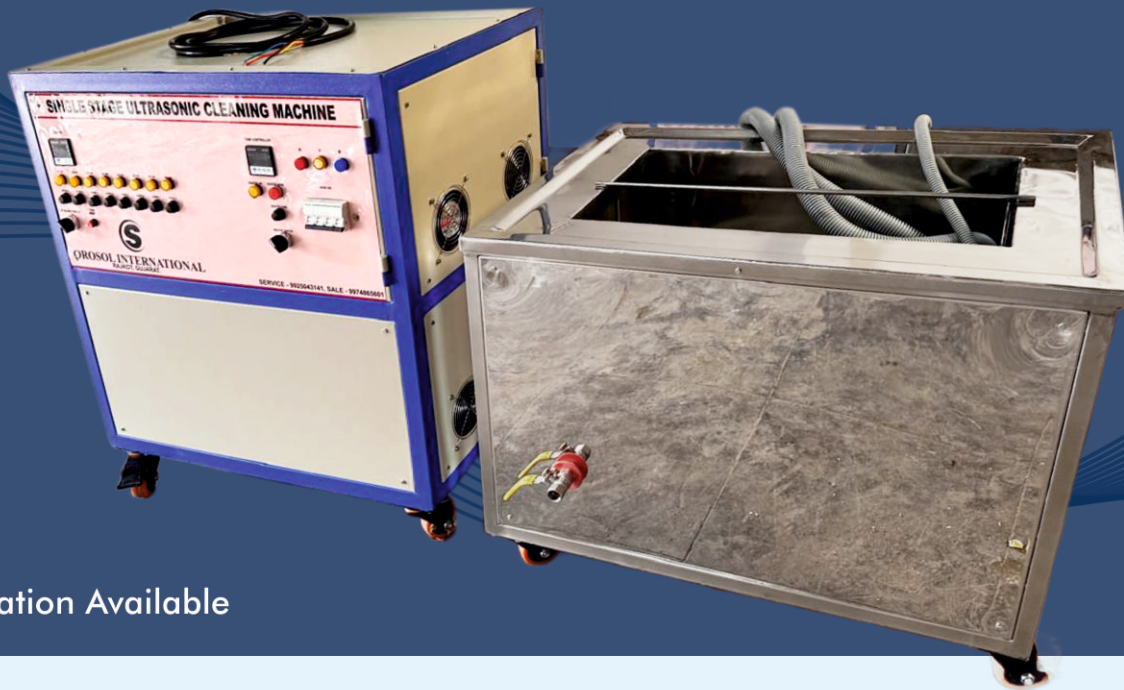
- Filter Type : 10 Pocket Filter
- Polisher Motor : 0.75 HP
- Wet Dust Collector Motor : 0.5 HP
- Dry Dust Collector Motor : 1 HP
- Dimensions : 30" X 26" X 48"



CLEANING DIVISION

ULTRASONIC CLEANER

The Ultrasonic Jewelry Cleaner Machine with Digital Timer is designed to effectively clean your glasses, rings, earrings, necklaces, watch straps, and other delicate items. Using advanced ultrasonic technology, this machine generates high-frequency sound waves to remove dirt, grime, and residue from even the tiniest crevices. Equipped with a digital timer, it allows you to customize the cleaning duration for optimal results. Perfect for restoring the shine of your jewelry and accessories without the need for harsh chemicals. Compact and easy to use, it's ideal for both home and professional use, ensuring your valuables look as good as new.



* Customization Available

MACHINE NAME	SIZE	ULTRA POWER	HEAT POWER
3.0 Ltr. Ultrasonic	8 X 5 X 5 Inch	50 WATT	200 WATT
4.5 Ltr. Ultrasonic	8 X 6 X 6	100 WATT	400 WATT
6.0 Ltr. Ultrasonic	10 X 6.5 X 5.5	150 WATT	400 WATT
9.0 Ltr. Ultrasonic	11 X 7 X 7	250 WATT	400 WATT
9.0 Ltr. Ultrasonic	11 X 7 X 7	250 WATT	1000 WATT
12.0 Ltr. Ultrasonic	12 X 8 X 8	300 WATT	1500 WATT
15.0 Ltr. Ultrasonic	14 X 10 X 7	500 WATT	1500 WATT
15.0 Ltr. Ultrasonic	14 X 10 X 7	750 WATT	1500 WATT
20.0 Ltr. Ultrasonic	16 X 10 X 8	500 WATT	1500 WATT
25.0 Ltr. Ultrasonic	16 X 10 X 10	600 WATT	1500 WATT
30.0 Ltr. Ultrasonic	19 X 10 X 10	720 WATT	2000 WATT

SPECIFICATION

- Cleaning frequency : 33 Khz
- Input Voltage : 230V Ac
- Tank Outer Body : SS 304, 18
- Tank Materials : SS 316/16 SWG
- Heating Capacity : 500w/ 1500w

Auto Water Feed Steam Jet Cleaner

Professional grade jewelry cleaner machine. Equipped with a full water reminder device and a water filter. Suitable for gold and silver jewelry of elaborate designs.

Maintains stable working pressure output of 7KG. 6000W power for deep cleaning. Made of 304 stainless steel material.

Powerful Cleaning With a robust 6000W steam output, this cleaner effectively removes dirt and grime from jewelry, ensuring a thorough clean for both silver and gold pieces.

Large Capacity Featuring a 15L tank, this machine allows for multiple pieces of jewelry to be cleaned simultaneously, saving time and enhancing efficiency for both personal and professional use.

Durable Design Constructed from high-quality stainless steel, the Aura Steam jewelry cleaner is not only sleek and modern, but also built to withstand heavy usage, ensuring longevity and reliability in cleaning.

Specification :

- Power Supply : 440V AC, 6 KW
- Steam Pressure : 7 Kg.
- Steam Temperature Boiler : 150-180 Degree C
- Over Dimension : 24" X 18" X 55"
- Net Weight : 70 Kg.



STEAM JET CLEANER

SPECIFICATION

- Electric Supply : 1Phase, 230v AC, 50Hz
- Nozzle : 00 Spray Nozzle by Solonid Valve
- On/Off : By foot switch
- Steam Pressure : 6 Kg
- Pressure Cont. : By pressure switch (Indfos)
- Water Level : By level sensor
- Temp. Controller : By thermostat
- Steam Temperature Boiler : 150-180 Degree C

Liter Capacity	Heating Capacity
6 Ltr	2000 watts
9 Ltr	2000 watts
14 Ltr	2000 watts





☎ +91 99743 05600 | +91 81403 05600
✉ sales@orosol.in
🌐 www.orosol.in
📍 Lati Plot 14 No., B/H Gokul Hospital,
Kuvadva Road, Rajkot - 360 003

SCAN FOR WHATSAPP

